

Installation Instructions >> Pannier Racks >> Africa Twin 1000 Adventure Sports



Installation Instructions >> Pannier Racks >> Africa Twin 1000 Adventure Sports

1. Remove front and rear seats. Rear seat's removal requires 10mm socket and ratchet.

2. Remove the bolts that secure the passenger handle/rear rack.



---

3. Remove the two Allen bolts that keep the plastic cover in place above the rear brake light.



4. Gently remove the plastic cover without breaking the small clips.



---

## Installation Instructions >> Pannier Racks >> Africa Twin 1000 Adventure Sports

---

5. Using an 8mm wrench or socket, remove both bolts from the rear brake light housing and lift and dismount the housing.



6. Using a 5mm Allen key, remove both Allen bolts that are in line with the rear turn signals.



---

7. Using 12mm socket and wrench, remove the top bolt from the middle in order to drop the license plate holder.



8. Remove both bolts from under the rear fender using a 12mm socket and wrench.

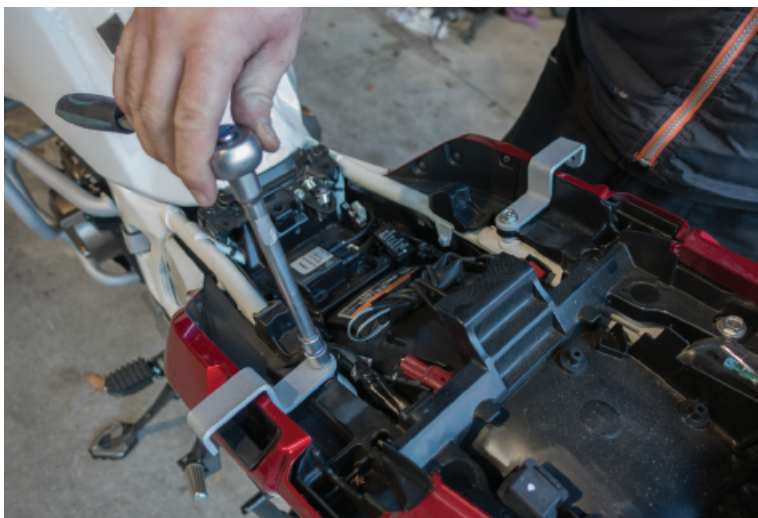


---

## Installation Instructions >> Pannier Racks >> Africa Twin 1000 Adventure Sports

---

9. Mount the supplied tabs.



10. Remove the right side passenger foot peg. Between the front tab and the subframe, add the supplied spacer.



---

11. Mount the pannier rack.



12. Repeat step #10 on the left side.



---

## Installation Instructions >> Pannier Racks >> Africa Twin 1000

---

13. Repeat step #11 on the left side.



14. Install the top cross brace.

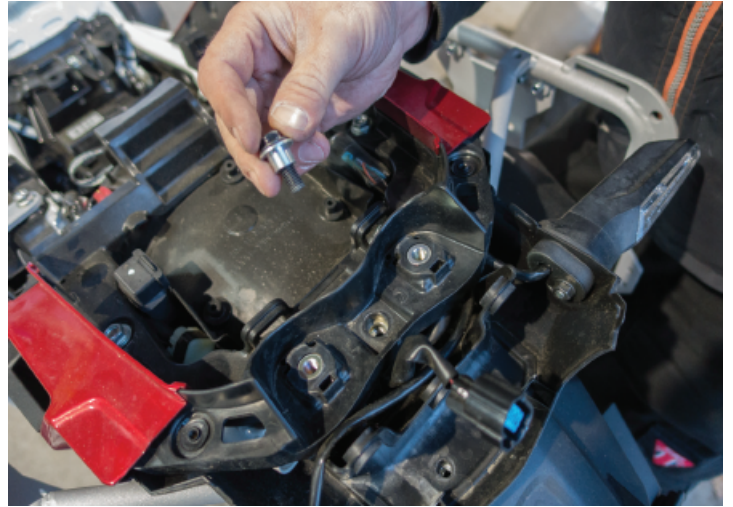


---

15. Tighten the top cross brace.



16. Re-insert the top middle bolt you removed in step #7. Tighten it.

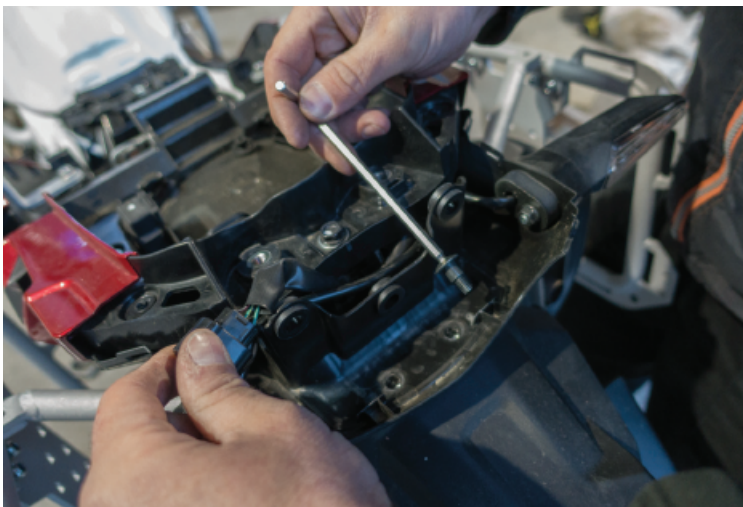


---

## Installation Instructions >> Pannier Racks >> Africa Twin 1000

---

17. Re-insert and tighten the two Allen bolts from step #6.



18. Insert the supplied 6x20mm bolts, add but leave the locking nuts loose on both sides.



---

19. After lining up the mounting holes of the rear cross brace, go ahead and insert the 6x20mm hex head bolts and secure them using the provided washers and locking nuts.



20. Re-install the rear brake light and the plastic cover.



---

Installation Instructions >> Pannier Racks >> Africa Twin 1000 Adventure Sports

---

21. Re-install the passenger handle.



**22. Finally tighten all the bolts and nuts. Make sure to double-check all the bolts and nuts once again after a test ride.**